

# Drugs: Cost and Consequences Activity Book Answer Key



# Table of Contents

National Standards .....	3
Cost of Production, Trafficking and Money Laundering ...	4
Cost of Narco-Terrorism .....	5
Cost to Communities .....	6
Cost to Children .....	7
Cost to the Environment .....	8
Cost of Prescription Drug Abuse .....	9
Cost of Drug-Impaired Driving .....	10
Cost to Brain and Body .....	11
Discovery Corner .....	12
Breaking the Cycle .....	13
Local Story .....	14
Cost and Consequences .....	15
Map .....	Back Cover

# National Standards

Middle School

## Common Core Standards

History and Science Literacy

CCSS.ELA-LITERACY.RH.6-8.4

CCSS.ELA-LITERACY.RH.6-8.7

CCSS.ELA-LITERACY.RST.6-8.4

CCSS.ELA-LITERACY.RST.6-8.7

## Historical Thinking Standard

1.E

## National Science Standards

MS-LS-1-8

MS-LS-2-4

## National Health Education Standards

1.8.1

1.8.8

2.8.1

3.8.4

7.8.3

# Cost Of Production, Trafficking and Money Laundering



1) Match the drug with the picture of the plant it comes from.



OPIUM      COCAINE      MARIJUANA

2) Fill in the Blank: Money Laundering - The handling of money in such a fashion as to conceal or disguise its true source, deposit, movement or ownership.

3) You are a DEA agent and you come into this room. Name 3 things that could be used to smuggle drugs.



People, Shoes, Clothing

Dog, Pillow, Lining of Couch

Book, Remote

# Cost of Narco-Terrorism



4) Look at the Globe. Besides terrorist attacks and organizations, see if you can find any other consequences of drugs and drug money. List them here.

Answers will vary but some sample answers are: environmental damage, neglect, destroyed property, health problems, child labor, dangerous working environments.

5) After going through this section, do you think drugs affect only the person using them? Why or why not?

Answers will vary

# Cost to Communities



6) Find these objects in the Crack Den or Meth Bathroom.

A



B



C



7) Answer these questions regarding these objects.

A) Is this diaper in the trash? Does this mean this place is clean or dirty? Why or why not?

It is not in the trash. It is dirty because there is trash on the floor just laying around

B) Do you think working with flammable materials like lighter fluid is safe? Why or why not?

No, because it can explode or start a fire

C) Do you think that putting this drain cleaning chemical in your body would be harmful? Why or why not?

Yes, because it is a toxic chemical that should not be in your body

# Cost to Children



8) Name two drugs that youth might abuse early on.

tobacco, alcohol, inhalants, marijuana, and pharmaceutical drugs

9) List three ways that children can be affected by drugs.

Abuse, neglect, working in drug trade, caught in the crossfire, using drugs themselves

10) Collaboration between which two groups is proven to reduce drug use?

- A) Teachers and teens
- B) Government and teens
- C) Parents and teens**
- D) Community leaders

# Cost to the Environment



11) List at least 2 differences between these two pictures

Trash, clear cutting, fewer trees and plants, dangerous

chemicals, compacted ground, less leaf litter, fewer branches

12) Do drugs affect animals and plants? Explain using evidence from the exhibit.

Yes. Answers will vary but example could be the chemicals and agricultural imbalance of coca growing fields endanger 210 mammal species, 600 bird species, 170 reptile species, 100 amphibian species and 600 fish species in the Amazon and Orinoco River systems or 2.4 million hectares of rain forest have been lost to drug production fields in the Andean region of Peru, Bolivia and Colombia.



# Cost of Prescription Drug Abuse



Answer **BEFORE** you enter this section of the exhibit.

13) What do you think is dangerous about abusing prescription drugs?

*Answers will vary*

Answer **AFTER** reading this section of the exhibit.

14) What do you think is dangerous about abusing prescription drugs?

*Answers will vary*



# Cost of Drug-Impaired Driving



15) Find and circle these objects in both photos:  
Bike Bus Car



16) If the blurred picture is from the point of view of a driver that is under the influence and the other picture is the point of view of a driver who is not on drugs, who do you think is the most likely to get into an accident and why?

The blurred picture/the driver under the influence because it is harder to see objects since you cannot see them clearly.

# Cost to Brain and Body

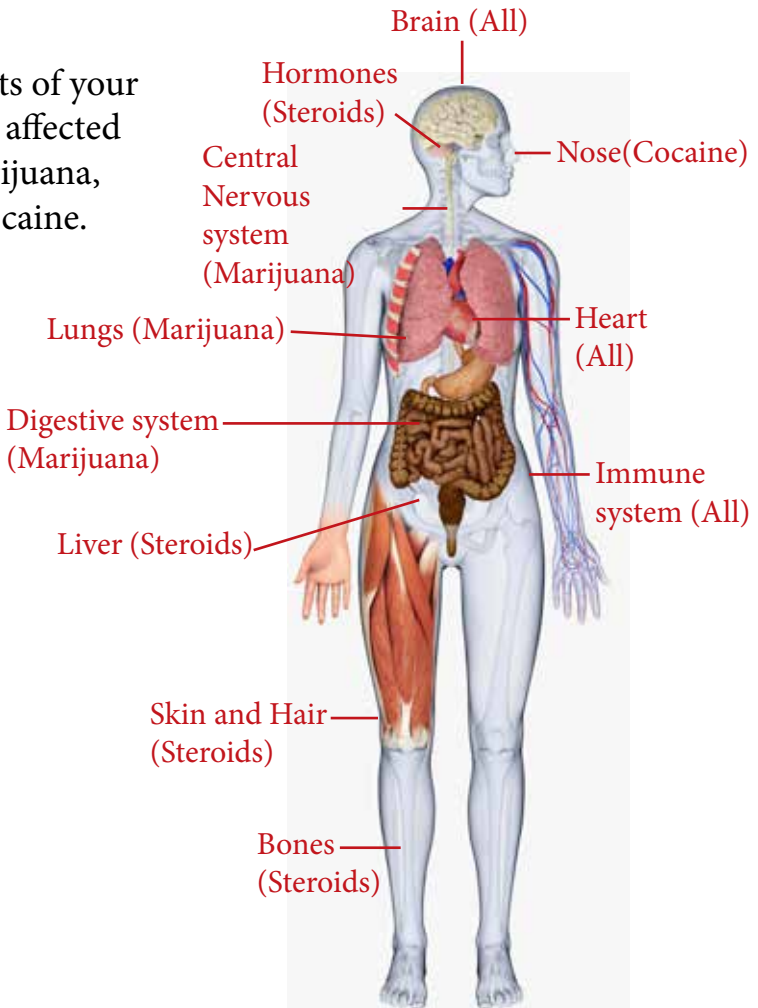


17) Anyone can become addicted to drugs.

**True** or False

18) Watch the video on the reward circuit. What is the neurotransmitter that is released? **Dopamine**

19) Label parts of your body that are affected by either marijuana, steroids or cocaine.



# Discovery Corner



20) Describe a situation where one of these pamphlets would be useful?

*Answers will vary*

21) For what services would you contact the local rehab/recovery center?

*Treatment for drug addiction*

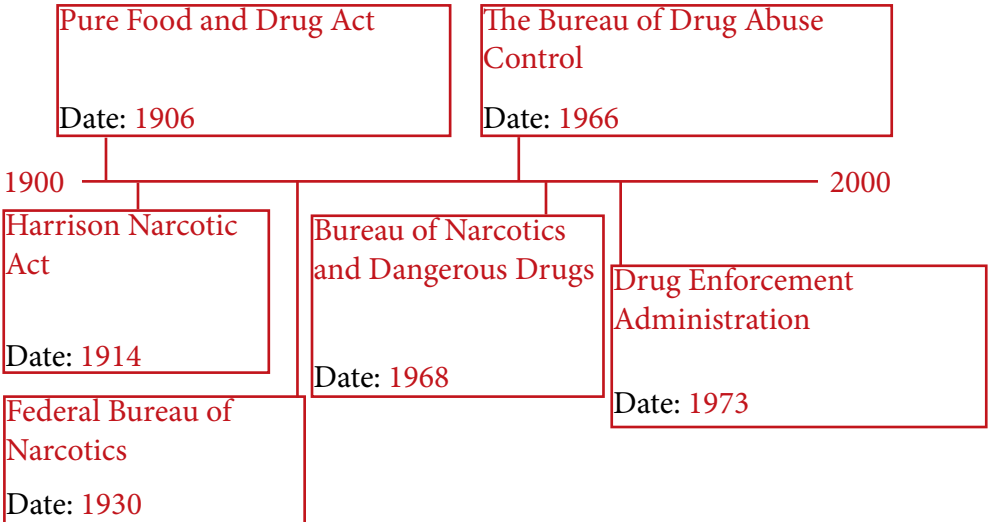
22) Where would you go to get more facts about drugs and drug abuse?

*Answers will vary but some examples are NIDA, SAMSA, DEA or local agencies*

# Breaking the Cycle



23) Fill in the timeline with the creation of these laws and agencies with date :  
Bureau of Narcotics and Dangerous Drugs, Federal Bureau of Narcotics, Harrison Narcotic Act, Drug Enforcement Administration, Bureau of Drug Abuse Control, Pure Food and Drug Act



24) What is an activity that you could do instead of doing drugs?

Answers will vary

25) What is a way that Jason could have said no to drugs ?

Answers will vary

# Local Story

26) Why is Florida considered a “gateway” for drugs?

Because of its extensive coastline

27) What are two drug related issues that are of concern in Florida?

“Pill Mills” and “Grow Houses”

# Cost and Consequences

(reminder that consequences can be good or bad)

- 1) Think about what the cost and consequences of drugs are to Ms. Jenkins and those around her.
- 2) Think about the cost and consequences of terrorist organizations that are supported by drug money.
- 3) Think about the cost and consequences of drugs to Emma and the community around the meth lab.
- 4) Think about the cost and consequences of drugs to Jimmy and his siblings.
- 5) Think about the cost and consequences of drugs to Adam and the National Park.
- 6) Think about the cost and consequences of drugs to Doctor Patel, his patients and the people that received those illegal prescriptions.
- 7) Think about the cost and consequences of drugs to Carl and his body.
- 8) Think about the cost and consequences of drugs to Daniel, his friends and family.
- 9) Think about the cost and consequences of drugs to Jason and those around him.
  
- 10) What are the cost and consequences of drugs to **YOU**?

# Map